

Saturday, March 4, 2023

**Legacy of Educational Excellence High School
Athletic Building**

**A TECA Sanctioned Contest
Hosted by the
LEE High School Band Booster Club
And the LEE Band and Legacy Color Guard**



VOLS Band



Competition 8:30am

Questions?

CONTACT: Alex Yanez 210.356.0884

ayanez1@neisd.net

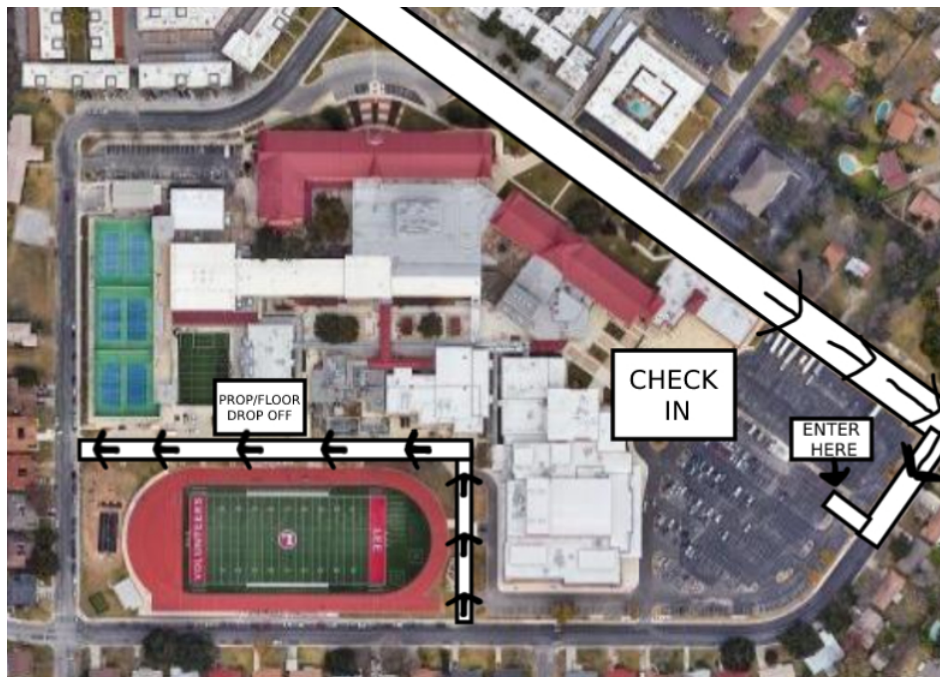
LEE High School Contest Information

1. Location, Directions and Map to Drumline and Winter Guard Competition:

LEE High School - Athletic Building
1400 Jackson-Keller Road
San Antonio, Tx. 78213



Bus/ Equipment Truck Route



See maps on following pages for parking, unit check-in and equipment information.

Bus/ Spectator Parking



Campus Map



2. Contest Flow

All Contest rules and regulations from the 2023 TECA Constitution and By-Laws and 2023 WGI Rule Books will be followed.

Parking

Bus Parking will be separate from the spectator parking. Buses will be parked on the Band Lot off of Montview Street. ****Please let the parking attendant know if you will be planning on leaving after your units' performance so we do not block you in****

Spectator Parking will be in the large parking lot off of Montview street. Please note, the performance gym is on the opposite side of the school so arrive with plenty of time to walk so you do not miss your unit's performance time.

Check-in

The check-in table will be located at the entrance of the school off of Montview street. Directors and students can get dropped off at the check-in area but the bus will need to loop around and park in the band lot as indicated on the map. Performing members must check in prior to warm-up.

- Equipment- At check-in, performers must show the check-in representative that equipment is appropriately padded and taped. Maps of the school and performance times will be available.
- Guard, Crew and Staff Admission- Admission stamps will be given to performers, directors, and up to 10 student crew members. *Spectators will receive a wristband when they purchase tickets.*

Cafeteria Area/ Color Guard Area

Each unit will have a designated area to store personal items. Concessions will be available both in the cafeteria and in the Athletic Building. **NO OUTSIDE** food or drink is allowed in the high school.

Students and Staff may not spin, toss or maneuver equipment inside any of the buildings at any time other than in designated areas.

You may use the courtyard area next to the cafeteria for extra equipment warmup.

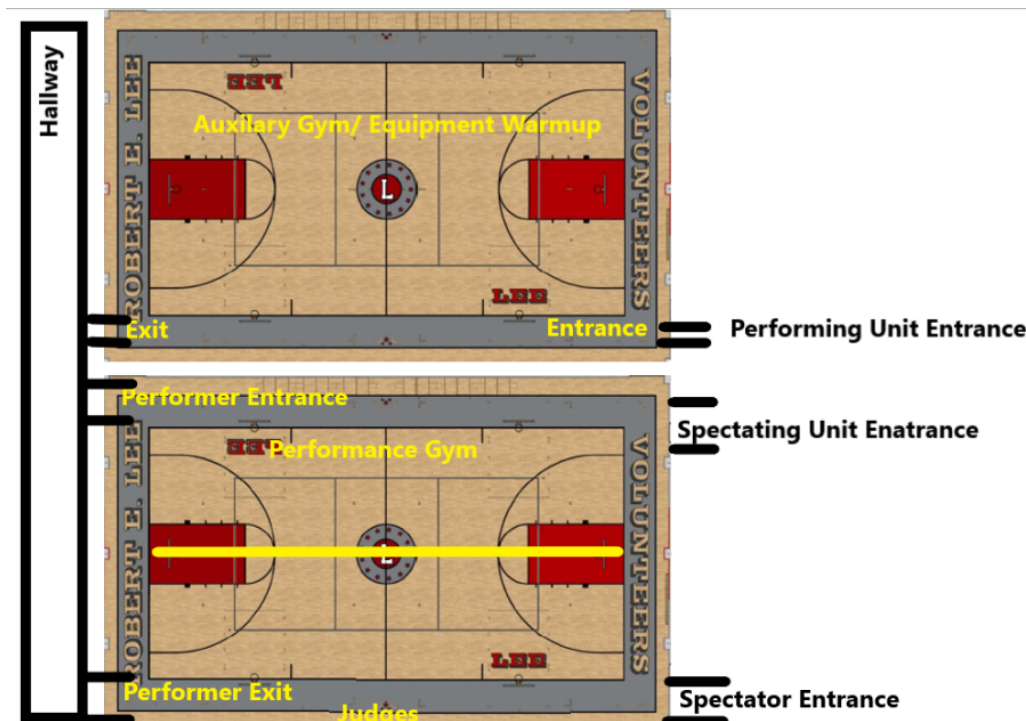
Performance (Body Warm-up, Equipment Warm-up and Performance Notes)

- **Ready** – When it is time for your group to be ready, report to the Ready table right outside the Cafeteria and your guide will escort you until you finish performing. Equipment and props will be double checked for appropriate taping for protection of the gymnasium floors.
- **Body Warm-Up** – From the Ready table, students will proceed to body warm-up. Students may stretch or do a run through of body mechanics. No equipment will be utilized during the body warm-up segment of the official warm-up time. A sound system will be available.
- **Equipment Warm-Up** – From Body Warm-Up, students will proceed to equipment warmup. The group will be in a holding area until the Equipment Warm-Up time starts. A sound system will be available.
- **Performance** - After Equipment Warm-Up, students will be led to the performance area. The group will be in a holding area until the official set-up and performance time starts.

We will be using a **Horizontal Center Line Flow** for the Performance Area.

Drumlines: Units will warm-up on the small turf field adjacent to the Athletic Building and will be directed to the performance gymnasium.

Guards: Units will enter from the area closest to Equipment Warm-Up and will exit on the opposite side. Large Props must enter and exit through the same doors. Entering groups will be held back until all props have cleared the doorway.



Post Performance

After you exit the performance area, staff members should make sure that equipment is put away. Guards will be directed to a floor-folding area. Please fold floors quickly and exit the area to prevent a "traffic jam." ***Please note: there are a few steps exiting the performing gym.*** Staff members should proceed to pick up show music. Comments and score sheets will be sent to you electronically.

Retreat

Students will line up in the warm-up gym during the last performance in the classification block. Retreat should begin promptly at the conclusion.

3. Admission (Spectators)

Students - \$5.00 (children under 5 free)

Adults - \$10.00

4. Concessions

Concessions will be available throughout the contest. **Outside food or drink will not be allowed inside the school.**

5. Souvenirs, Shout-Outs (Air-grams), Flowers and Other Items

There will be booths selling miscellaneous items. The cost for air-grams will be \$3 or two for \$5 and congratulatory flowers will be available for purchase, as well as a festival t-shirt listing participating groups and a festival patch.

6. Online help and information

Online information and help is available via the TECA website at <http://www.go-teca.org>..

We look forward to seeing you at the LEE High School TECA Guard Contest!



MENU



Hot & Fresh

Burger	\$5
Sausage Wrap	\$4
Pizza Slice	\$3
Nachos / Takkis	\$4



Snacks

Candy	\$2
Chips	\$2
Popcorn	\$2
Pickles	\$2
Prepack snacks	\$1



Combos

with drink & Chips

Burgers	\$10
Sausage	\$9
Pizza	\$8



Drinks

Bottle Water	\$2
Soda	\$3
Sports Drinks	\$3

PERCUSSION MAP ONLY

